

Serial no.

F05-00633

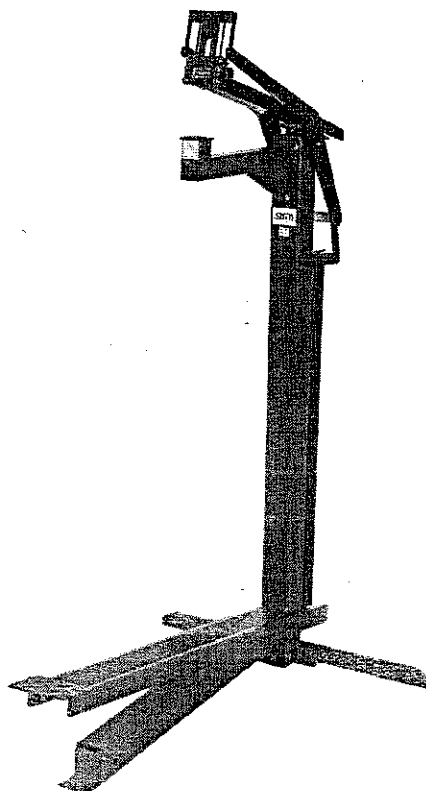
# MECHANICAL SIDE BOTTOMER

**MODEL:** F53

## MANUAL

### **WARNING**

BEFORE OPERATING THIS STAPLER. ALL OPERATORS SHOULD STUDY THIS MANUAL TO UNDERSTAND AND FOLLOW THE SAFETY WARNINGS AND INSTRUCTIONS. KEEP THESE INSTRUCTIONS WITH THE STAPLER FOR FUTURE REFERENCE. IF YOU HAVE ANY QUESTION, CONTACT YOUR DISTRIBUTOR.



## **TOOL SPECIFICATIONS**

- MODEL OF TOOL:.....
- DIMENSIONS  
(LENGTH X HEIGHT X WIDTH)..... MM X MM X MM
- WEIGHT (WITHOUT FASTENERS)..... KGS
- STAPLES SPECIFICATION.....CROWN: 14.8MM  
LENGTH 6,9, 12, 15MM
- STAPLES CAPACITY.....315 PCS

## **SAFETY INSTRUCTIONS**

READ THIS MANUAL AND UNDERSTAND ALL SAFETY INSTRUCTIONS BEFORE OPERATION THE TOOL. IF YOU HAVE ANY QUESTIONS, PLEASE CONTACT OUR AUTHORIZED REPRESENTATIVES.

### **WARNING**

1. AT THE WORKPLACE, ALWAYS WARE THE PROTECTIVE EQUIPMENT SUCH AS SAFETY GLASSES, HEAD PROTECTION.
2. DO NOT PLACE YOUR HEAD OR ANY PART OF YOUR BODY IN THE STAPLE CLINCHING AREA BETWEEN DRIVER SUPPORTER UNIT (048) AND MOLD (032).
3. IF THERE IS NOT A CARTON IN POSITION. DO NOT PRESS THE STEP BOARD SET (030) DOWN.

## ASSEMBLY

1. FIND A SUITABLE PLACE.
2. OPEN THE PACKING AND STAND THE MACHINE UP.
3. USE 6 MM HEX. WRENCH AND 13 MM SPANNER TO ASSEMBLE THE BALANCER (027).
4. ASSEMBLE THE SPRING (026).

## OPERATING

1. PULL PUSHER (007) BACKWARDS UNTIL IT STOPS ON STOPPER (008). THEN ROTATE PUSHER (007) UP INTO POSITION.
2. INSERT 3 STICKS OF APPROPRIATE STAPLES INTO THE MAGAZINE (005) FROM BACK. LET THE STAPLES SLIDE FORWARD TO THE FRONT OF THE MAGAZINE (005).
3. PULL PUSHER (007) BACK TO DOWNRIGHT POSITION AND GENTLY LET THE PUSHER (007) SLIDE FORWARD AGAINST THE STAPLES. DO NOT LET THE PUSHER (007) SLIDE FORWARD TO ENGAGE STAPLES AT HIGH SPEED OR IT MAY DEFORM THE STAPLES OR DAMAGE THE MACHINE.

**NOTE** : KEEP SPRING (036) CLEARLY AND DON'T BEND THE SPRING (036)

4. PUT THE CARTON INTO POSITION.

**NOTE** : STRAIGHT THE CENTER LINE OF CARTON TO THE DRIVER SUPPORTER UNIT (048) CENTER LINE.

5. PRESS THE STEP BOARD SET (030) DOWN BY FOOT UNTIL IT STOPS. THEN RELEASE THE STEP BOARD SET (030)

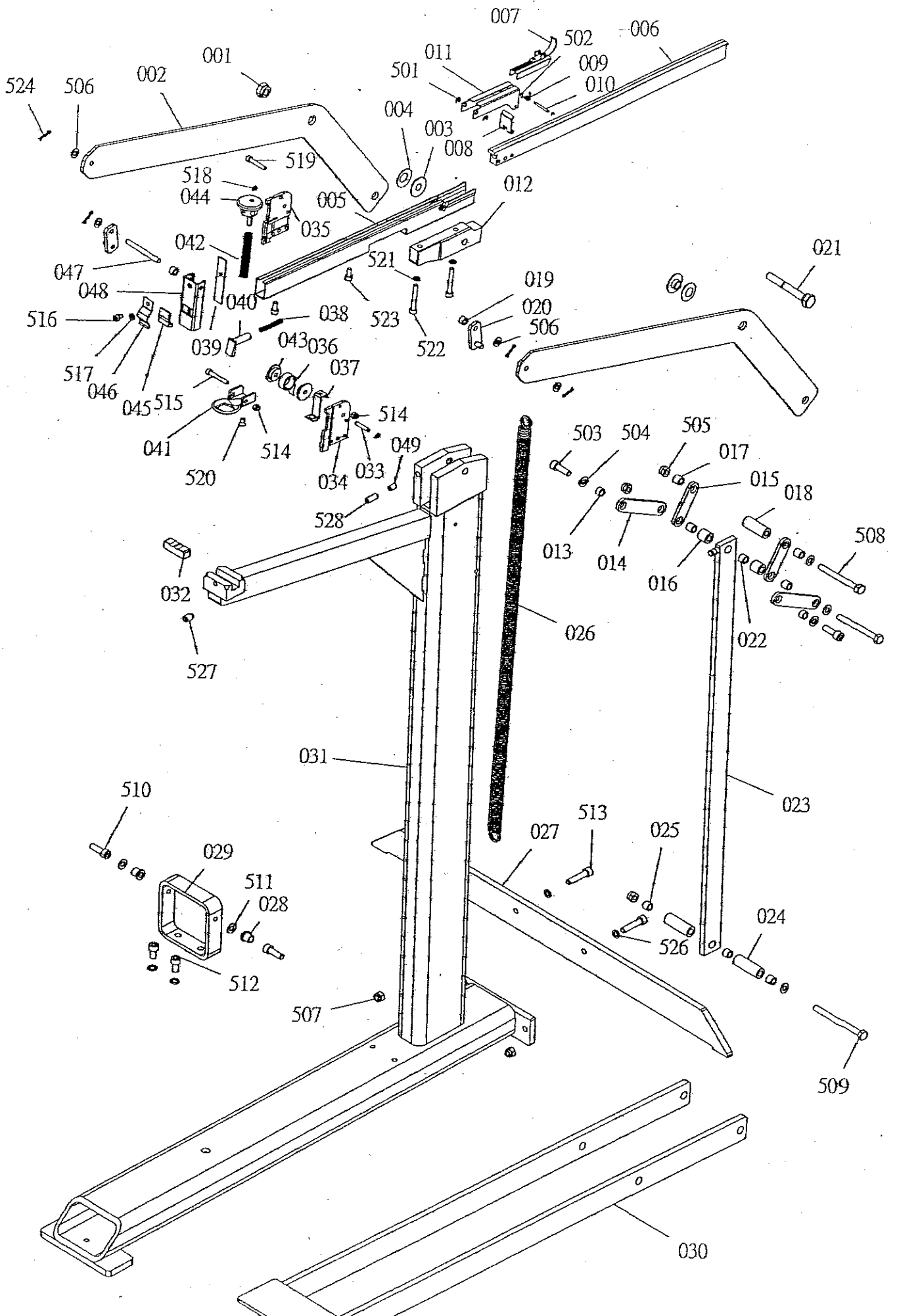
**NOTE** : IF THERE IS NOT A CARTON IN POSITION, DO NOT PRESS THE STEP BOARD SET (030) DOWN.

## **CLEARING A JAM**

1. PULL THE PUSHER (007) BACKWARDS. AND ROTATE INTO POSITION. THEN REMOVE THE REST OF THE STAPLES.
2. CLEAR THE JAM WITH PLIERS.

## **MAINTENANCE**

1. KEEP THE MACHINE CLEARLY.
2. FEED OIL ON EVERY SHAFT BEFORE OPERATING EVERYDAY.



PARTS NO.	DESCRIPTION	Q'TY	SPECIFICATION
A07304901	NUT	1	
A07300101	LINK 1	2	
A07305001	SPACER 3	2	
A07305101	DISHING WASHER	2	
A07300401@	MAGAZINE A UNIT	1	
A07300501	MAGAZINE B	1	
A07301901@	PUSHER UNIT	1	
A07302601	STOPPER	1	
A07302701	SPRING	1	
A07305801	SHAFT	1	
A07302401	COVER	1	
A07302801	BRACKET	1	
A07303801	SPACER 1	2	
A07300301	LINK 3	2	
A07300201	LINK 2	2	
A07303101	TUBE	2	
A07304401	SPACER 2	2	
A07303001	TUBE	4	
A07305401	TUBE	1	
A07305501@	LINK 6 UNIT	2	
A07304801	SHAFT A	2	
A07303501	SPACER 6	1	
A00603503@	LINK 4 UNIT	2	
A07303301	TUBE	2	
A07303401	SPACER 5	2	
A00603801	SPRING	1	
A07303901	BALANCER	1	
A07305301	SPACER 4	2	
A07304001	BRACKET	1	
A07304101@	STEP BOARD SET	1	
CMB-S-P1	BODY SET	1	
CMS-S-P1	BODY SET	1	
07303601	MOLD	1	
07303201	SHAFT	1	
07300601	SUPPORTER R.	1	
07300701	SUPPORTER L.	1	
07302301	SPRING	1	
07301801	BRACKET	1	
07301401	SPRING	1	
07301601	DRIVER	1	

ITEM	PARTS NO.	DESCRIPTION	Q'TY	SPECIFICATION
040	A07301301	GUIDE	1	
041	A07300801	BRACKET	1	
042	A07301501	SPRING	1	
043	A07302201	SUPPORTER	2	
044	A07300901@	HEAD UNIT	1	
045	A07302901	BLOCK	1	
046	A07301701	FRONT PLATE	1	
047	A07301101	SHAFT	1	
048	A07301001@	DRIVER SUPPORTER UNIT	1	
049	A07305901	SHAFT STOPPER	1	
501	BAF10402	E-RING	2	φ4
502	BAF10202	E-RING	2	φ2
503	BAC0408252	HEX.SOC.HD.BOLT	2	M8x1.25-25
504	BAE04081	WASHER	5	φ8
505	BAD01081	LOCK NUT	3	M8x1.25
506	BAE04071	WASHER	4	φ7
507	BAD01081	LOCK NUT	2	M8x1.25
508	BAC0808801	HEX.HD. BLOT	2	M8x1.25-80
509	BAC08081401	HEX.HD. BLOT	1	M8x1.25-140
510	BAC0408252	HEX.SOC.HD.BOLT	2	M8x1.25-25
511	BAE04081	WASHER	2	φ8
512	BAC0608162	HEX.SOC.HD.BOLT	2	M8x1.25-16
513	BAC0408352	HEX.SOC.HD.BOLT	2	M8x1.25-35
514	BAD01051	LOCK NUT	2	M5x0.8
515	BAC0405352	HEX.SOC.HD.BOLT	1	M5x0.8-35
516	BAC0405062	HEX.SOC.HD.BOLT	1	M5x0.8-6
517	BAE01052	SPRING WASHER	1	φ5
518	BAF10402	E-RING	2	φ4
519	BAC0405302	HEX.SOC.HD.BOLT	1	M5x0.8-30
520	BAC0205102	HEX.SOC.FLAT COUNTER SUNK HD. SCREW	1	M5x0.8-10
521	BAE01062	SPRING WASHER	2	φ6
522	BAC0406401	HEX.SOC.HD.BOLT	2	M6x1-40
523	BAC0906122	HEX.SOC.BUTTON HD. CUP SCREW	2	M6x1-12
524	BAJ0106	SNAP PIN	4	φ1.2*φ6
526	BAE01081	SPRING WASHER	2	φ8
527	BAC0308122	HEX.SOC.HEADLESS SCREW	1	M8x1.25-12
528	BAC0308202	HEX.SOC.HEADLESS SCREW	1	M8x1.25-20